



aevitas
group

PEMBA
mozambique



TRADEHOLD
CORPORATION

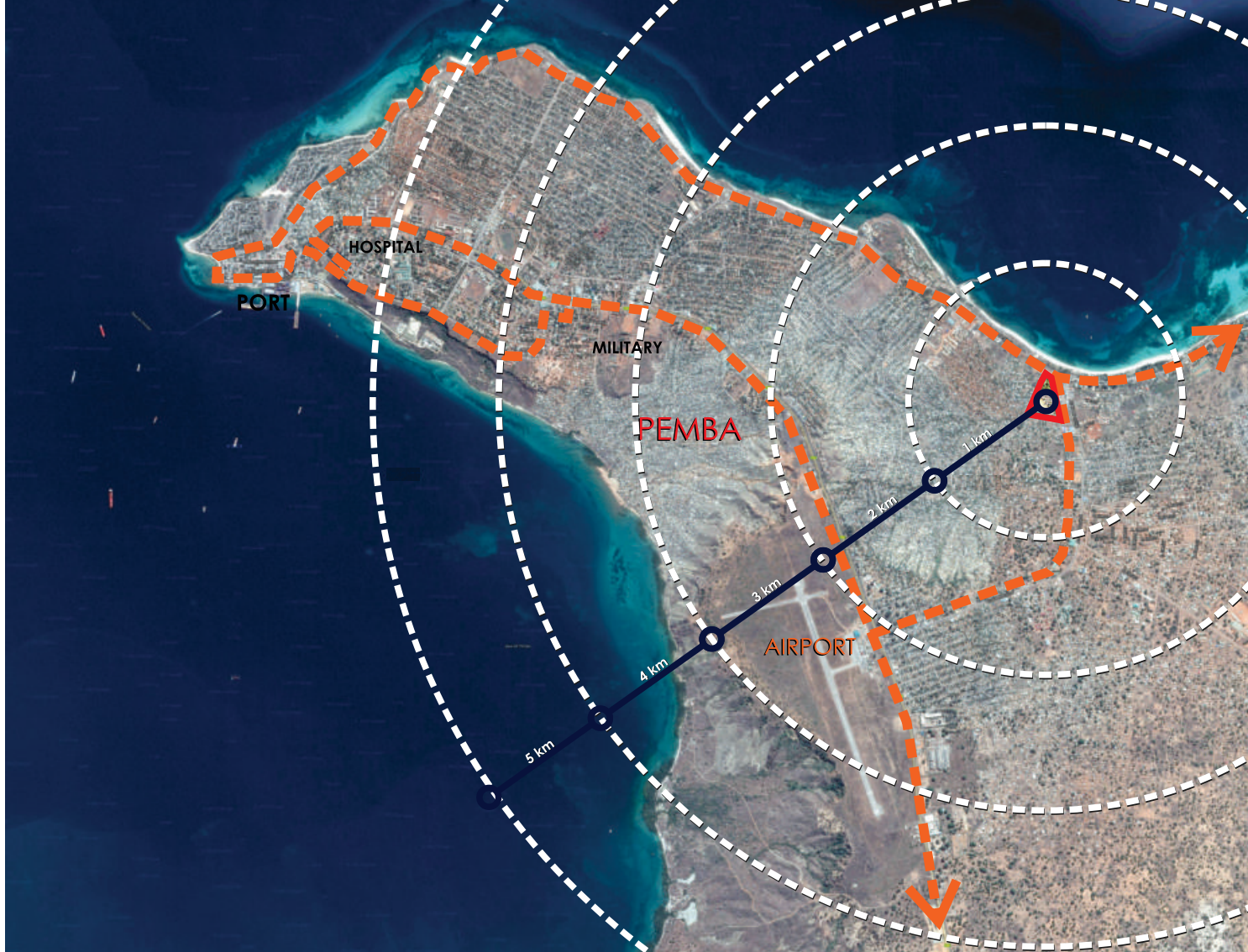
ATILBURY
CORPORATION



locality

locality

02





locality



plan









Pemba



MOZAMBIQUE

Desktop Demographic Data

DESKTOP DATA: Information “at hand” which was obtained through previous desktop applications in the office and physical fieldwork studies / interviews with relevant persons at these locations; also internet research.



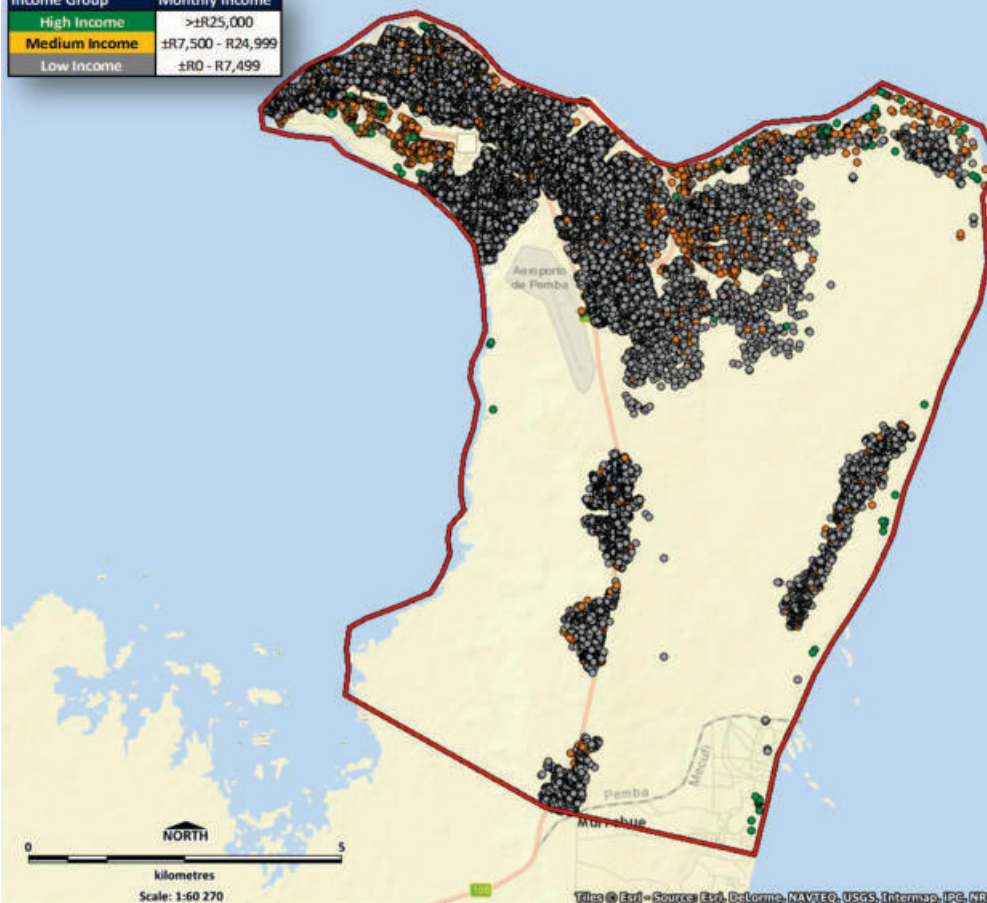
Pemba Demographics

Copyright 2015: Fernridge Consulting
Source: Microsoft Bing Imagery & 2013 Aerial Imagery

2 **FERNRIDGE**

Income Group	Monthly Income
High Income	>R25,000
Medium Income	±R7,500 - R24,999
Low Income	±R0 - R7,499

- Demographic data was extracted from aerial photography. A dot was placed on each individual formal household in order to determine the total count for the indicated area.
- Dwellings excludes CBD and all other areas not representative of residential nature (i.e. industrial etc.)
- Please note that these demographics are only representative of the extent of the current view & Fernridge boundary.



Pemba Demographics			
No. of dwellings within the Town Area			
Income	2013	2014	2015
High Income	138	147	156
Medium Income	2 956	3 141	3 338
Low Income	30 977	32 915	34 975
Total DWE	34 071	36 203	38 468
Annual Growth	6.26%		

Please Note: Fernridge endeavored to provide you with the most accurate household count based on the aerial imagery available to us at the time.

Pemba Demographics			
No. of dwellings within the Town Area			
Income	2013	2014	2015
High Income	138	147	156
Medium Income	2 956	3 141	3 338
Low Income	30 977	32 915	34 975
Total DWE	34 071	36 203	38 468
Annual Growth	6.26%		

- Demographics for the area was calculated extracting AfricaEye dwelling/household points, derived from high resolution aerial photography.
- The household classification process is subject to the quality of the aerial photography at the time and the interpretation thereof. This is a process of counting household dwellings ("rooftops") and the analysis of the income segment of the different types of dwellings in a foreign spatial setting.
- Also note that this household points data set does not include the CBD of the destination(s) or any other area NOT typical of a residential association (i.e. Industrial) as these are too problematic and risky to create and calculate.
- Note that this is a basic Desktop report which does not include the latest fieldwork verification. Household income ranges to be verified in the field.

Income Group	Monthly Income
High Income	>±R25,000
Medium Income	±R7,500 - R24,999
Low Income	±R0 - R7,499

LEASING ENQUIRIES:

JOEL PRISTA

joel.prista@ilulu.co.mz

+258 84 316 5890



LUKE CHANDLER

luke@aevitasgroup.co.za

+27 82 496 6983

[contact details](#)
